

Shellfish

An Introduction

FRM-121 (1+1)



Shellfishes

Shellfish is a food source and fisheries term for exoskeleton-bearing aquatic invertebrates used as food and commercial products, including various species of molluscs, crustaceans, and echinoderms

Although most kinds of shellfish are harvested from saltwater environments, some kinds are found in freshwater.

Common Examples of Crustacean Shellfishes



PRAWN or SHRIMS

Lobster





CRAB

**COMMON EXAMPLES
OF MOLLUSCEAN
SHELLFISHES**



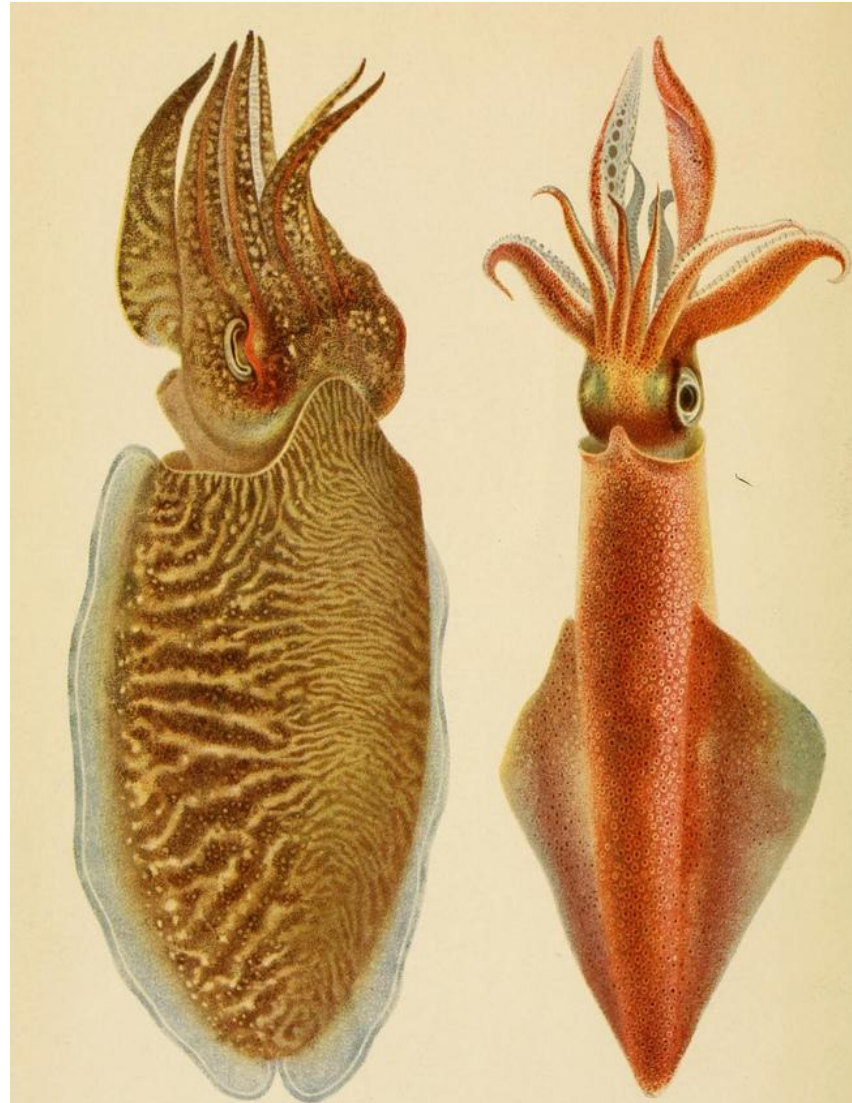
CLAMS & PEARL OYSTER



SNAIL



SNAIL SHELLS

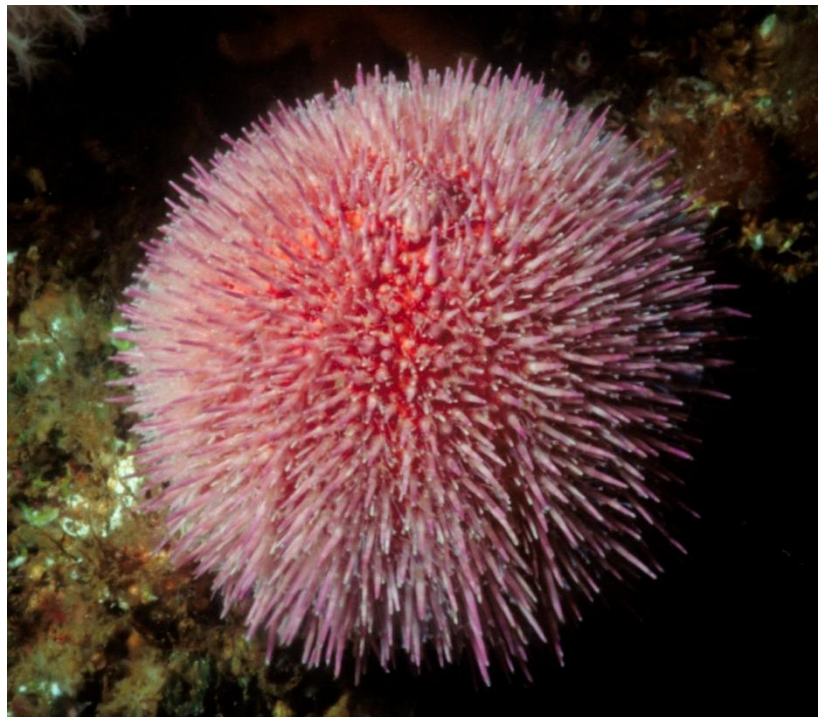


CUTTLEFISH & SQUID



OCTOPUS

**COMMON EXAMPLES
OF ECHINODERMATE
SHELLFISHES**



SEA URCHIN





SEA CUCUMBER

